



## Training and Personal Development



---

### June 2016

The RSB offers a wide range of training opportunities to help you develop personally and professionally.

In May and earlier in June, we ran courses on [Persuasive scientific report writing](#), [Science podcast production](#) and [Presentation skills](#).

In July the [Royal Microscopical Society](#) will be running courses, on which RSB members can receive significant discounts.

We will be running a summer course in August on [Painting Pollinators](#). Please join us on this fascinating art and science event, to be held at the artist's studio and wildlife garden in the beautiful Cotswolds.

Our wider range of [training courses](#) will recommence in September. Booking is already open for these courses, so please register soon to secure your place. Places are limited and will be allocated on a first come-first served basis.

If you know anyone who may be interested in attending one of our courses, please feel free to forward the course information on.

### Upcoming courses

**05.07.16**

[RMS LM Summer School](#)

**07.07.16**

[Getting the Most from your Confocal](#)

**15.08.16**

[Painting Pollinators](#)

**06.09.16**

[Mental Health in the Workplace](#)

**13.09.16**

[Unconscious Bias Training](#)

**19.09.16**

[An Introduction to Project Management](#)

**04.10.16**

[Making Science Memorable and Encouraging Scientific Enquiry for Primary School](#)

**10.10.16**

[Scientific Laboratory Leadership and Management](#)

**18.10.16**

[Environmental Awareness in the Workplace](#)

**24.10.16**

[A Practical Guide to Successfully Navigating the](#)



Best Wishes,  
Naomi Smith  
Training Officer

[Patent System](#)

28.10.16

[Team Science: Skills for Multidisciplinary Working and Collaboration](#)

---

## Upcoming courses

### RMS LM Summer School

5 - 7 July 2015

The RMS Light Microscopy summer school is an annual, residential three day course held at the University of York covering the principles of light microscopy. Participants are also trained in practical issues surrounding light microscopy. After introductory presentations, the course is taught predominantly through hands-on practical sessions.

£100 discount for Society members.

For more information please see the [event website](#).



---

### Getting the Most from your Confocal

07.07.16 - 08.07.16

This Course utilises many different sample types and fluorescent probes (DNA stains, classic antibody labels and fluorescent proteins) and these are chosen to best demonstrate particular problems and techniques. Focus is on the techniques they enable and the problems they generate, which will be applicable to any sample types. The 2-days consist of short tutorials followed by hands-on practice.

£100 discount for Society members.

For more information please see the event [website](#).



---

### Painting Pollinators

15 August 2016  
15 CPD points

Join us for a glorious summer day out, on this fascinating art and science event to be held at Cath's home-based classroom, studio and wildlife garden in the beautiful Cotswolds.

Cath Hodsmen is one of the country's leading entomological artists and is well-known for her unique and fascinating workshops where she takes students on magical journeys into the unseen world of insects.

This watercolour painting course is aimed at beginners. It will



examine the essential and fascinating relationship between pollinating insects and the plants that they live in, on and around.

For more information and to book your place, please see the [event webpage](#).

---

### **Mental Health in the Workplace**

**6 September 2016**  
**10.5 CPD points**

Your health, and that of your colleagues, should be one of your top priorities in the workplace. Mental health is no exception, and creating a working environment that is psychologically healthy is a shared responsibility.

This half-day workshop will help you to build your awareness of the range of mental health issues that we can experience. It will focus on how we can create a psychologically healthy working environment and improve our wellbeing inside and outside of work.

For more information and to book please see the [event website](#).

---



### **Unconscious Bias Training**

**13 September 2016**  
**9 CPD points**

It is now acknowledged that in addition to eradicating discrimination and bias within an organisation it is important to consider the role of unconscious bias on individual behaviours and the impact it is having on your ability to create an open, fair and inclusive workplace culture for all.

This half day awareness building course aims to educate staff and managers so that they can lead by example in the quest to change mind-sets and create a more diverse and inclusive workplace.

For more information wee the [event website](#).

---



### **An Introduction to Project Management**

**19 September 2016**  
**18 CPD points**

A course for those who have recently become involved in or responsible for project management but who have limited or no experience or training. Participants will learn the skills and planning tools they need to successfully complete a project, and how to anticipate and resolve the issues they are likely to encounter on the way.

For more information and to book a place please see the [event website](#).

---



## Encouraging Scientific Enquiry and Making Science Memorable for Primary School

**4 October 2016**  
**21 CPD points**

A full day course for primary school teachers to develop upon their science teaching. Trainer Jonathan Forgham is the founder of The Primary Works and was a primary school teacher with Hertfordshire County Council for 30 years.

For more information and to book a place please see the [event website](#).



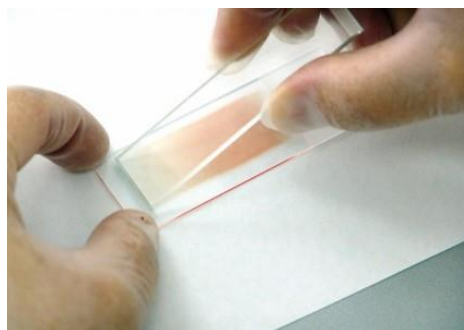
## Scientific Laboratory Leadership and Management

**10 October 2016**  
**21 CPD points**

Management skills are vital for a successful career in a scientific lab environment. As well as their research expertise, successful team leaders need to develop additional skills including the ability to support staff, manage their own team, and deal with issues within the team.

Following the success of the previous course last year, the Society continues to offer this one-day introductory course specifically to meet the needs of postdoctoral researchers in academic or industrial environments.

For more information and to book a place please see the [event website](#).



## Environmental Awareness in the Workplace

**18 October 2016**  
**9 CPD points**

This course provides an introduction to environmental issues within the workplace. It is ideal for those who need a basic understanding of environmental issues in the workplace, as well as staff in organisations that are looking to introduce an environmental management system, or simply improve their environmental performance.

For more information and to book, please see the [event website](#).



## A Practical Guide to Successfully Navigating the Patent System

**24 October 2016**  
**9 CPD points**

The seminar aims to give you an overview of the patent system and provide practical tips to scoring successes and avoiding pitfalls.

For more information and to book a place please see the [event website](#).



## Team Science: Skills for Multidisciplinary Working and Collaboration

28 October 2016  
18 CPD points

Learn about the skills required for multidisciplinary working and gain the tools and techniques that will support communication when thinking collectively about complex problems.

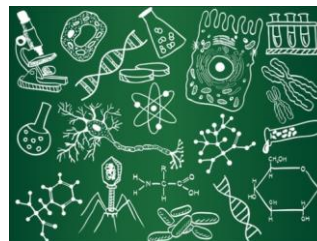
For more information and to book a place please see the [event website](#).



---

Attended a training course and enjoyed it?

Please [let us know](#) if you would like to write a short BLOG about your experience.



---

## In focus - Presentation Skills Course, 7 June 2016

Following its success last year, this half-day training course was repeated on the 7th of June 2016. Training was provided by Professor Sue Smith: Professor in Medical Education and Director of Teaching at the National Heart and Lung Institute, a constituent of the Faculty of Medicine, Imperial College London.

The course covered: Practical exercises on personal presentation and body language; how to structure your presentation; uses and abuses of visual aids; and meeting the needs of your audience.

It was interactive in style, with course attendees encouraged to participate.

The course was well attended and received brilliant feedback:

*Very instructive and practical. Gave me a good knowledge and the right tools for presentation of subjects.*

*Great course, useful to actually get experience presenting and being encouraged to be active in group discussion.*

We hope to repeat this course again next year, so please look out for it on our [website](#) if you are interested. Alternatively please [contact](#) our training officer to express your interest in this course.

---

## In focus - Science Podcast Production Workshop, 25 May 2016

On the 25th of May, the Society ran a new training course on Science Podcast Production. The course was delivered by Richard Hollingham from [Boffin Media](#). A former Today programme reporter and producer, with experience in local radio and national television, Richard presents science programmes for Radio 4 and World Service and is co-presenter/producer of the award-winning Space Boffins podcast.

This was an introductory hands-on course on how to podcast - from getting good quality sound and content - to getting your podcast online and heard. Attendees learnt about understanding audio recording, getting their science across, and what works best when there are no visuals. During the day attendees worked in small groups, as reporter/interviewee/producer, to produce their own short audio piece.

The course was well attended and received excellent feedback:

*I made a podcast! Really great hand-on experience.*

*Brilliant – Really Accessible; great that its so hands-on; satisfying to make a reasonable podcast by the end of the day.*

We hope to run further science communication skills courses next year, please look out for these in our subsequent training newsletters and on our [website](#). Alternatively please [contact](#) our training officer to express your interest in this course.



---

## Other Society news

---

### **Society launches Plant Health Professional Register**

**01 June 2016**

Plant health inspectors will now be able to gain recognition as part of a new professional register from the Royal Society of Biology.

Read more on our [website](#).



---

### **Council and Employment Representatives Strategy Discussion Session 8th June 2016**

On the 8<sup>th</sup> of June RSB Council members met with employer representatives, to discuss how the Society can better support industry. There are a growing number of industry members, which presents opportunities for the Society. The group suggested that the Society should support both SMEs and larger companies.

It was discussed how the Society could better support and develop skills in industry. Our training programme is of high value to industry, particularly to SMEs. The group identified a need to focus on shared skills for all, including: maths and statistics, computing and big data skills, animal and plant sciences, plant breeding, bench skills, project management and communication skills, experimental design and analysis, creativity, interdisciplinary skills, independence of thought and ability to learn from mistakes. Our CPD scheme is seen as

beneficial and the registers are seen to support and benchmark professional development through CPD. Degree accreditation is also valued by industry for developing skills. Graduates need to develop agility, with core skills that they can take anywhere.

It was felt that the Society needs to develop its profile amongst SMEs, through strategic, proactive engagement, with clear messages as to how to support them. Mentoring and peer group support is not often available within SMEs, but the Society can create the conditions for support and knowledge sharing across SMEs.

The group also discussed how the areas of membership and policy could be developed for industry needs.

The Society is now producing an action plan, based on the outcome of this discussion session, aimed at improving its training and CPD offering to support large and small industrial organisations.

---

## Science Communication Awards 2016

Are there bioscience researchers at your organisation? If any of your researcher staff are involved in communicating their work to the public, encourage them to enter the Royal Society of Biology Science Communication Awards 2016. There are two categories: New Researcher Prize (£750) and Established Researcher Prize (£1500). Apply by 30<sup>th</sup> June 2016. Find out more and enter on our [website](#).

---

## Calling all amateur photographers! Submit your Biology: from Big to Small themed photos

From avalanche to zooplankton. From nanotechnology to the world's largest sewage systems. We're inviting photographers to explore interactions between the macro and the micro in biology. There are two categories each with a cash prize: 18+ (£1000) and under 18s (£500). Enter by 31<sup>st</sup> August 2016. Find out more and enter on our [website](#).



---

## Jobs Board

[Communications Manager](#)  
The Physiological Society London, Greater London

[Research Fellow in Cancer Immunology](#)  
Nottingham Trent University (NTU) Nottingham, East Midlands

[View all jobs](#)



---

## Regional/MO Events

Event	Date
<a href="#">Ion Channels Workshop</a>	01.07.16
<a href="#">SysMIC 2016 Workshop</a>	04.07.16

## Deadlines and opportunities

Event	Deadline
<a href="#">Photography Competition 2016</a>	31.08.16

---

[Manage your subscription with MySociety](#)