

CAREERS IN SCIENCE COMMUNICATION

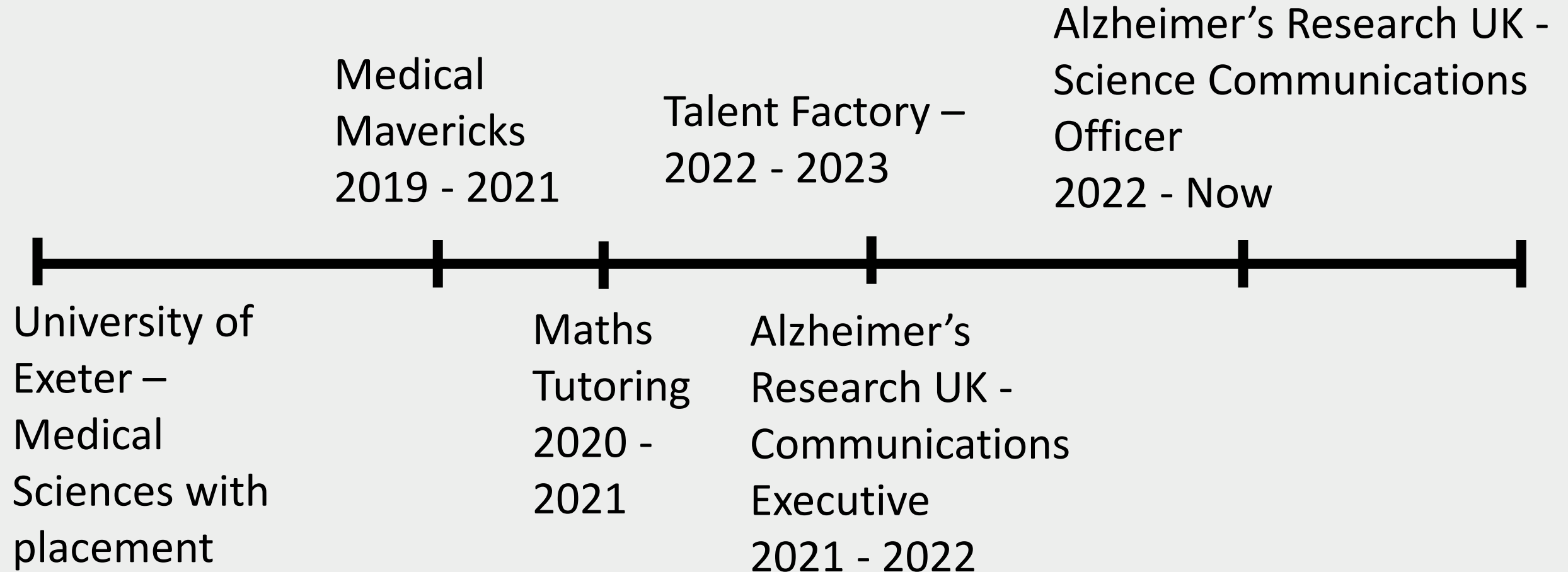


QUANG TRAN

Science Communications Officer

**ALZHEIMER'S
RESEARCH UK** **FOR A
CURE**

How did I get here?



Press/News

Blog writing

Social Media

My
responsibilities

Website
writing

Progress
reports

Videos

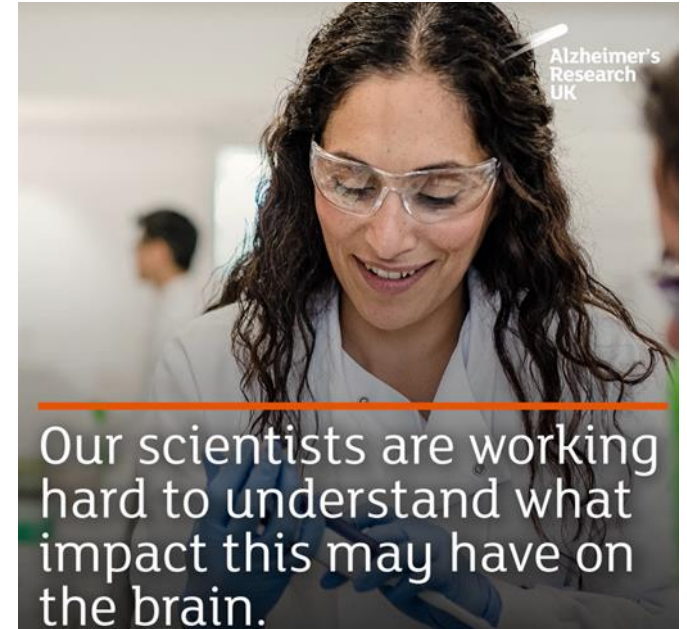


WHY COMMUNICATE RESEARCH?

**ALZHEIMER'S
RESEARCH UK** **FOR A
CURE**

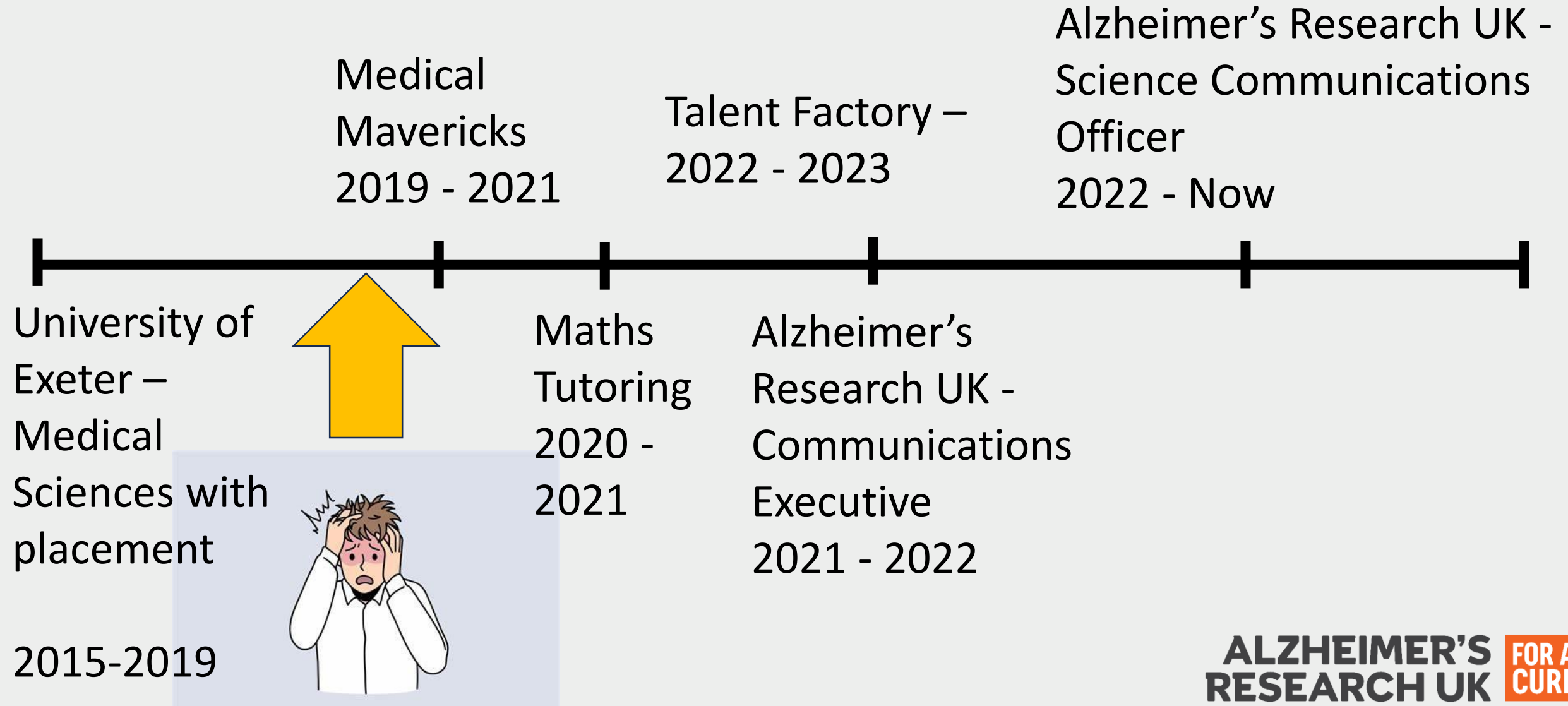
Why is Science Communications important?

- Supporters want to know what their money is going towards.
- Inspires people about science and the difference it can make.
- Rebuild trust in science/experts the 'post-truth era'.
- Drives meaningful debates about science and balances hype/quackery.
- Accurately communicate risk.
- Good PR is really important for the institutions you work for and for ARUK.



Our scientists are working hard to understand what impact this may have on the brain.

How did I get started?



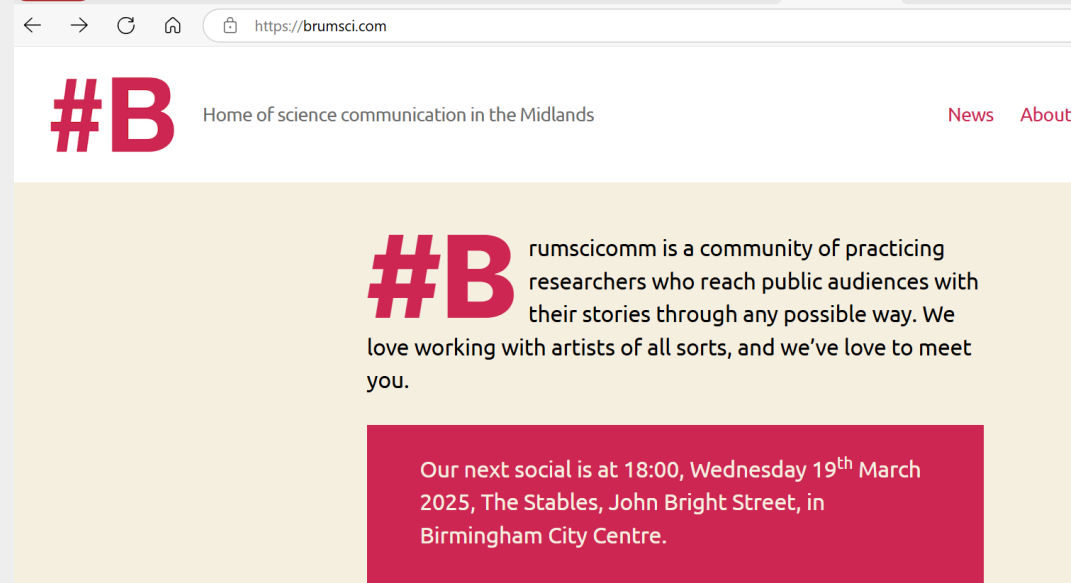
Sci-Comms socials

<https://katiesteckles.co.uk/scicommsocials/>

Science Communication Socials

Here is a list of UK science communication socials which take place regularly. Please note, this information may not be up to date so use the contact details below to confirm, or find out what alternative arrangements are in place during the pandemic.

- The [BIG STEM Communicator network](#) has been hosting [regular online socials, which you can sign up for on their website](#).
- **Queer Sci-Comm Socials** are also currently held virtually. They're for anyone who identifies as LGBTQ+ from anywhere in the world, and are a safe space to meet up, chat and talk sci-comm! [Sign up link](#)
- **London Sci-Comm Social:** fun, friendly meetups for everyone interested in science communication. [Facebook Group](#) - [Twitter page](#).
- **Manchester Sci-Comm Burrito:** meets on a semi-regular basis at Barburrito on Piccadilly Gardens from 6.30pm. Details at scicommburrito.co.uk.
- **Leeds Sci Comm** - a (semi) regular informal meet up for sci commers in the Leeds Area. [Facebook Group link](#)
- **Birmingham Sci-Comm Social:** meets once a month in different locations, often in Birmingham city centre. Website is at brumsci.com.
- **Glasgow Sci-Comm Social:** socials on the first Thursday of every month. Details on the [@SciCommGlasgow Twitter account](#) and [Facebook Group](#), and on the website at scicommglasgow.co.uk. Email



← → ↻ 🏠 <https://brumsci.com>

#B Home of science communication in the Midlands [News](#) [About](#)

#B rumscicomm is a community of practicing researchers who reach public audiences with their stories through any possible way. We love working with artists of all sorts, and we've love to meet you.

Our next social is at 18:00, Wednesday 19th March 2025, The Stables, John Bright Street, in Birmingham City Centre.

**ALZHEIMER'S
RESEARCH UK** **FOR A
CURE**

Medical Mavericks





Talent Factory

← ↻ 🏠 🔒 <https://drstevecross.squarespace.com/talent-factory> 🔍 ☆ 🌐

STEVE CROSS

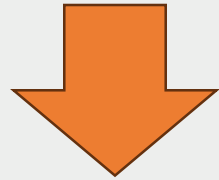
[TALENT FACTORY](#) [TRAINING](#) [CONSULTANCY](#)
[CONTACT](#)

**The Showoff Talent Factory -
turboboost your performing and
communicating, over a year, for
free**

**ALZHEIMER'S
RESEARCH UK** **FOR A
CURE**

Alzheimer's Research UK

Communications Executive – entry level position



Science Communications officer

Where can you go?

- Move up the organisation in-house for charity
- Work for press office
- Scientific Journals
- Freelance communicators
- Medical writing and communications agency
- University communications departments

Useful links

Charity jobs

<https://www.charityjob.co.uk/>

X Research UK websites like

<https://www.alzheimersresearchuk.org/about-us/work-for-us/>

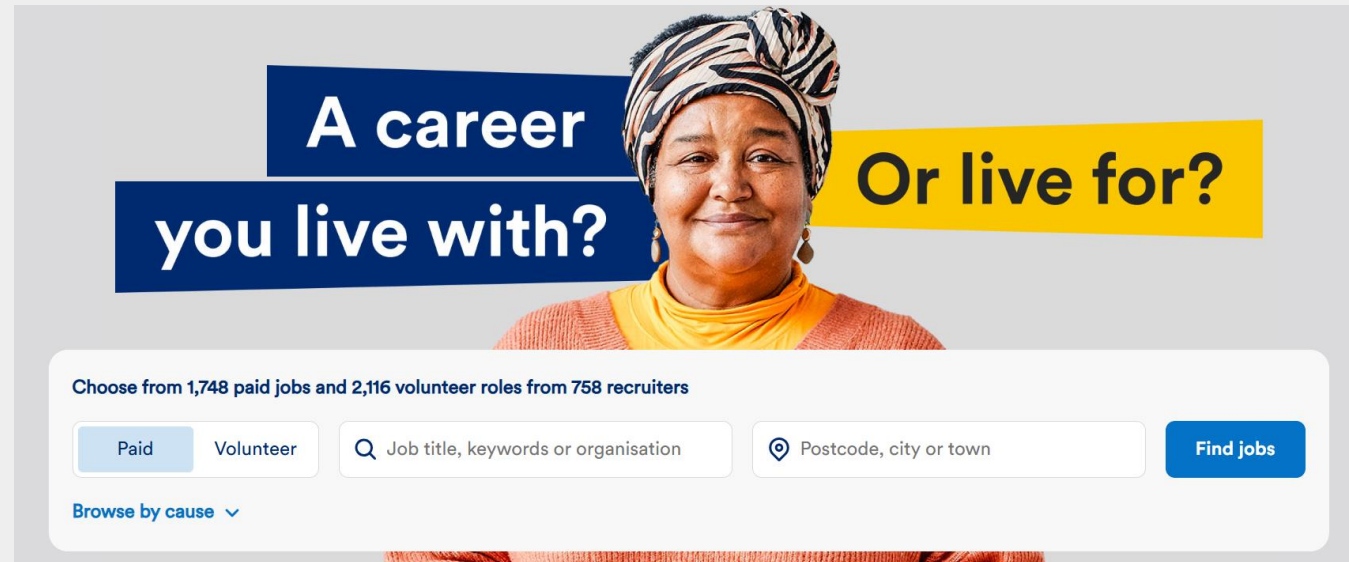
<https://www.cancerresearchuk.org/about-us/careers>

Talent Factory

<https://drstevecross.squarespace.com/talent-factory>

Sci-Comms Socials

<https://katiesteckles.co.uk/scicommsocials/>



A career you live with? **Or live for?**

Choose from 1,748 paid jobs and 2,116 volunteer roles from 758 recruiters

Browse by cause ▾

Feel free to email me!

quangdtran2@gmail.com