



Department
for Environment
Food & Rural Affairs



Careers in Plant Health

Suzannah Pearce



Forestry Commission
England



Environment
Agency

Introduction



Plant Health Undergraduate Studentship



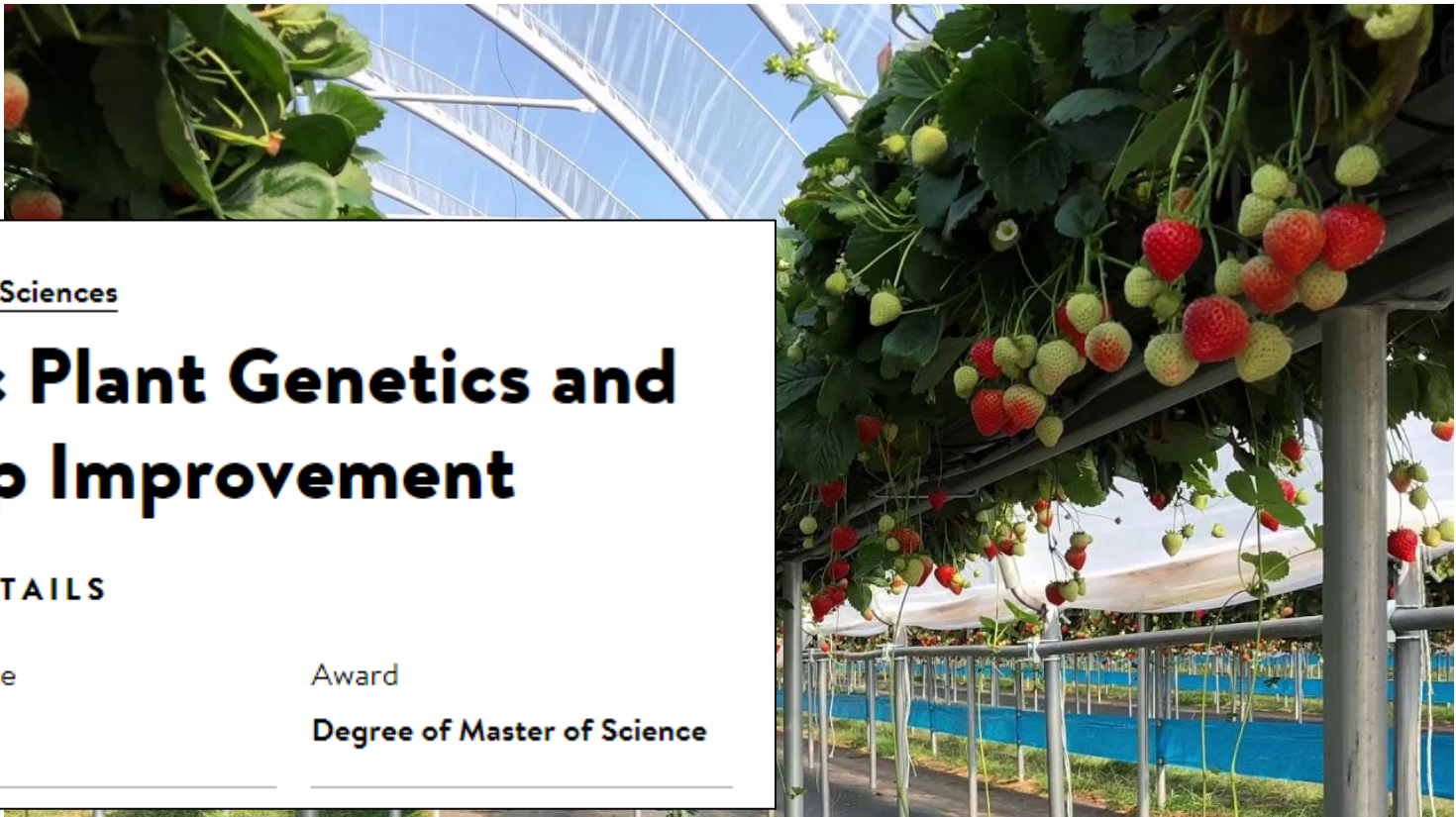
Introduction



Plant Health Undergraduate Studentship



Plant Health Undergraduate Studentship



Biological Sciences

MSc Plant Genetics and Crop Improvement

KEY DETAILS

Attendance

Award

Full Time

Degree of Master of Science

Plant Health Undergraduate Studentship



Biological Sciences

MSc Plant Genetics and Crop Improvement

KEY DETAILS

Attendance

Full Time

Award

Degree of Master of Science



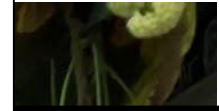
Department
for Environment
Food & Rural Affairs

Introduction



Society of
biology

Plant Health



Biological Sciences

MSc Plant Genetics and Crop Improvement

KEY DETAILS

Attendance

Full Time

Award

Degree of Master of Science



Agenda

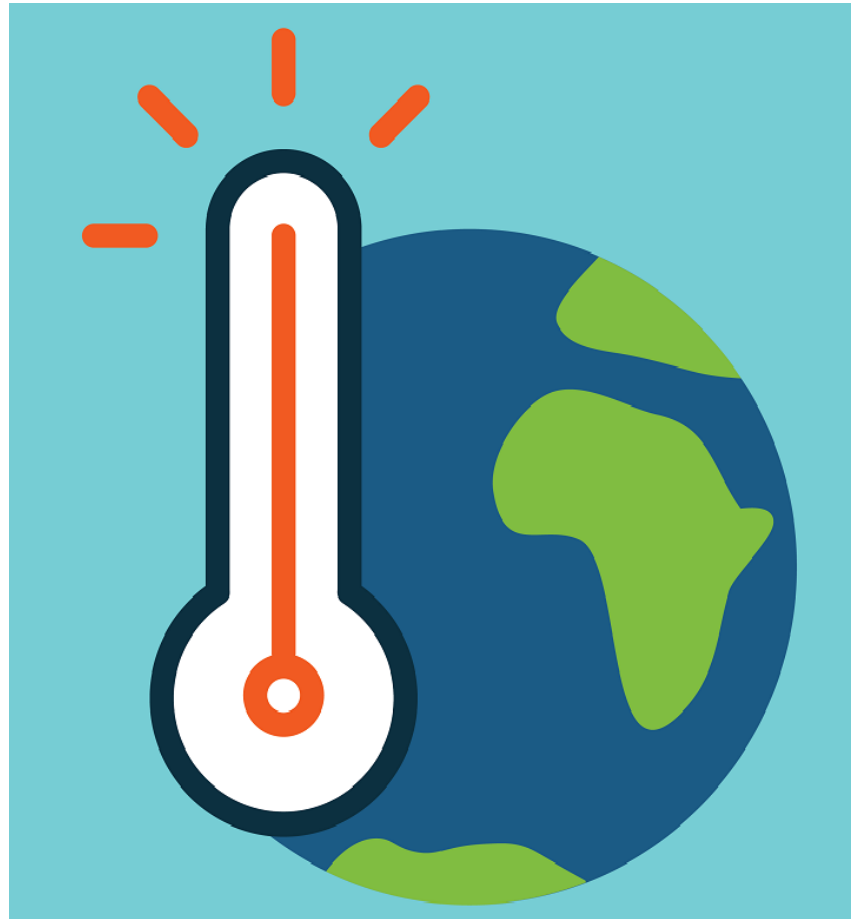
- UK plant health
- Why apply?
- Roles in the Civil Service
- Application process



UK plant health

There are a number of factors that threaten our biosecurity.

- Climate change



UK plant health



- Global trade

UK plant health

- Numerous ways of moving pests



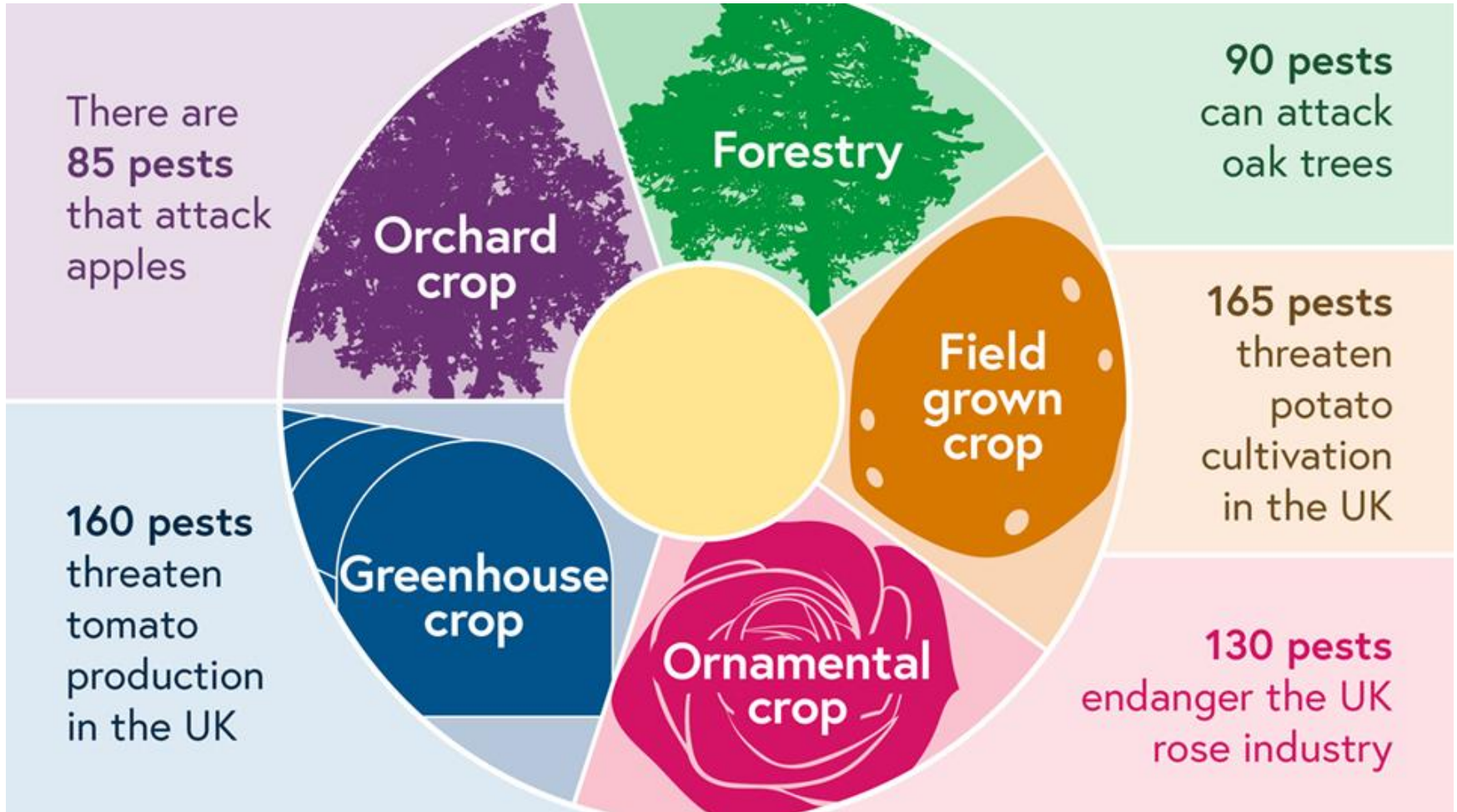
UK plant health

- Numerous ways of moving pests



UK plant health

- Diversity of plant pests and pathogens



UK plant health



UK plant health



160 pests threaten tomato production in the UK

Greenhouse crop

Ornamental crop

130 pests endanger the UK rose industry

UK plant health



**amental
crop**

**130 pests
endanger the UK
rose industry**

UK plant health



Roles in the Civil Service

There are currently over **30** professions in the Civil Service, including:

Policy

Economics

Finance

Operational Delivery

Law

Communications

Project Delivery

HR

Commercial

Science and Engineering

Medical

Occupational Psychology

Social Research

Intelligence

Continuing professional development

- All civil servants are entitled to 5 days of learning and development each year
- Wide range of opportunities, varying from:
 - Secondments
 - Job shadowing
 - Mentoring
 - Professional qualifications and memberships
 - Formal training courses

Continuing professional development



Canadian Food
Inspection Agency



Continuing professional development



Canadian Food
Inspection Agency



Continuing professional development



Canadian Food
Inspection Agency



WARWICK
THE UNIVERSITY OF WARWICK



Ways to join

- Civil Service Fast Stream (including the [Science & Engineering Fast Stream](#))
- Civil Service Jobs
- Apprenticeships
- Internships

Ways to join

- Civil Service Fast Stream (including the [Science & Engineering Fast Stream](#))
- Civil Service Jobs
- Apprenticeships
- Internships



Competitive Starting Salary

Fast streamers receive a starting salary of £31,186.

Upon completion, fast streamers have an earning potential of £45-55,000.

Ways to join

BETA Your [feedback](#) will help us to improve.

[Home](#) [Applications](#) [Job alerts](#) [Account details](#) [Sign out](#) [Cymraeg](#)

Civil Service job search

Find jobs in the Civil Service and central government organisations

What

Enter job title, skill or keywords

Where

Enter a postcode, town or region

[Search for jobs](#)

[Advanced search](#)

Ways to join



BETA Your [feedback](#) will help us

Civil Service job search

Find jobs in the Civil Service

What

Enter job title, skill or keywords

[Exotic Bacteria Senior Scientist - Mycoplasma \(ID 20/37\)](#)

Animal and Plant Health Agency

New Haw, South East England, KT15 3NB

Salary : £44,500

Grade : Senior Executive Officer

Approach : External

Closes : 11:55 pm on Sunday 30th March 2025

Reference : 393488



**Animal &
Plant Health
Agency**

[Mycoplasma Diagnostic Lead \(ID2809\)](#)

Animal and Plant Health Agency

New Haw, South East England, KT15 3NB

Salary : £37,480

Grade : Higher Executive Officer

Approach : External

Closes : 11:55 pm on Monday 31st March 2025

Reference : 390389



**Animal &
Plant Health
Agency**

[Veterinary Investigation Officer \(VIO\) ID3015](#)

Animal and Plant Health Agency

APHA Veterinary Investigation Centre Merrythought
Calthwaite Penrith Cumbria CA11 9RR

Salary : £41,220

Grade : Senior Executive Officer

Approach : External

Closes : 11:55 pm on Wednesday 26th March 2025

Reference : 390611



**Animal &
Plant Health
Agency**

How to get an internship in the Civil Service

- If you have contacts, **use them**
- There are also schemes you can apply to

For undergraduates:

Summer internship programme



Civil Service
Fast Stream

<https://www.faststream.gov.uk/summer-internship-programme/index.html>

For PhD students:

UKRI policy internships scheme

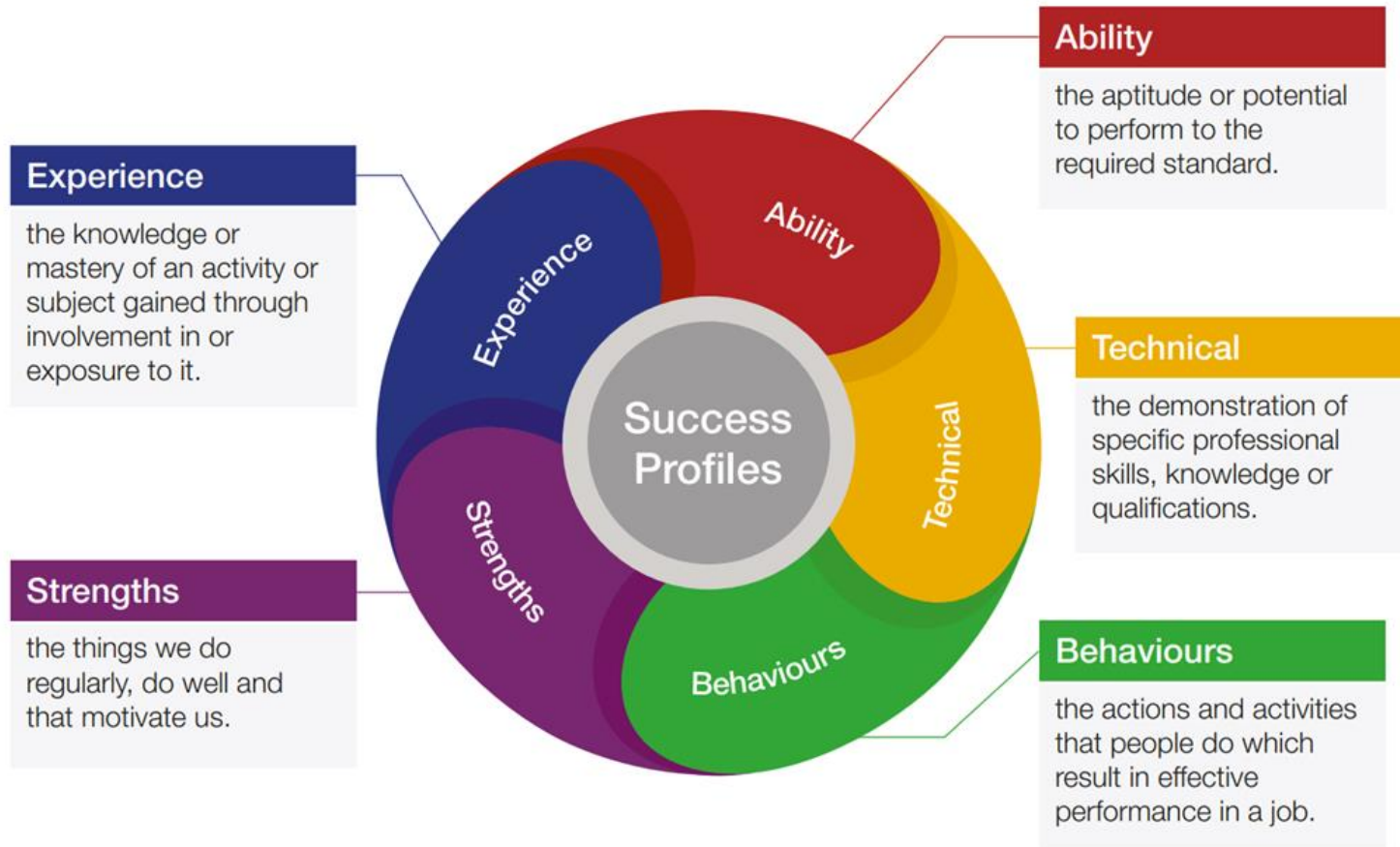


<https://www.ukri.org/apply-for-funding/studentships-and-doctoral-training/get-training-and-development-to-support-your-doctorate/ukri-policy-internships/>



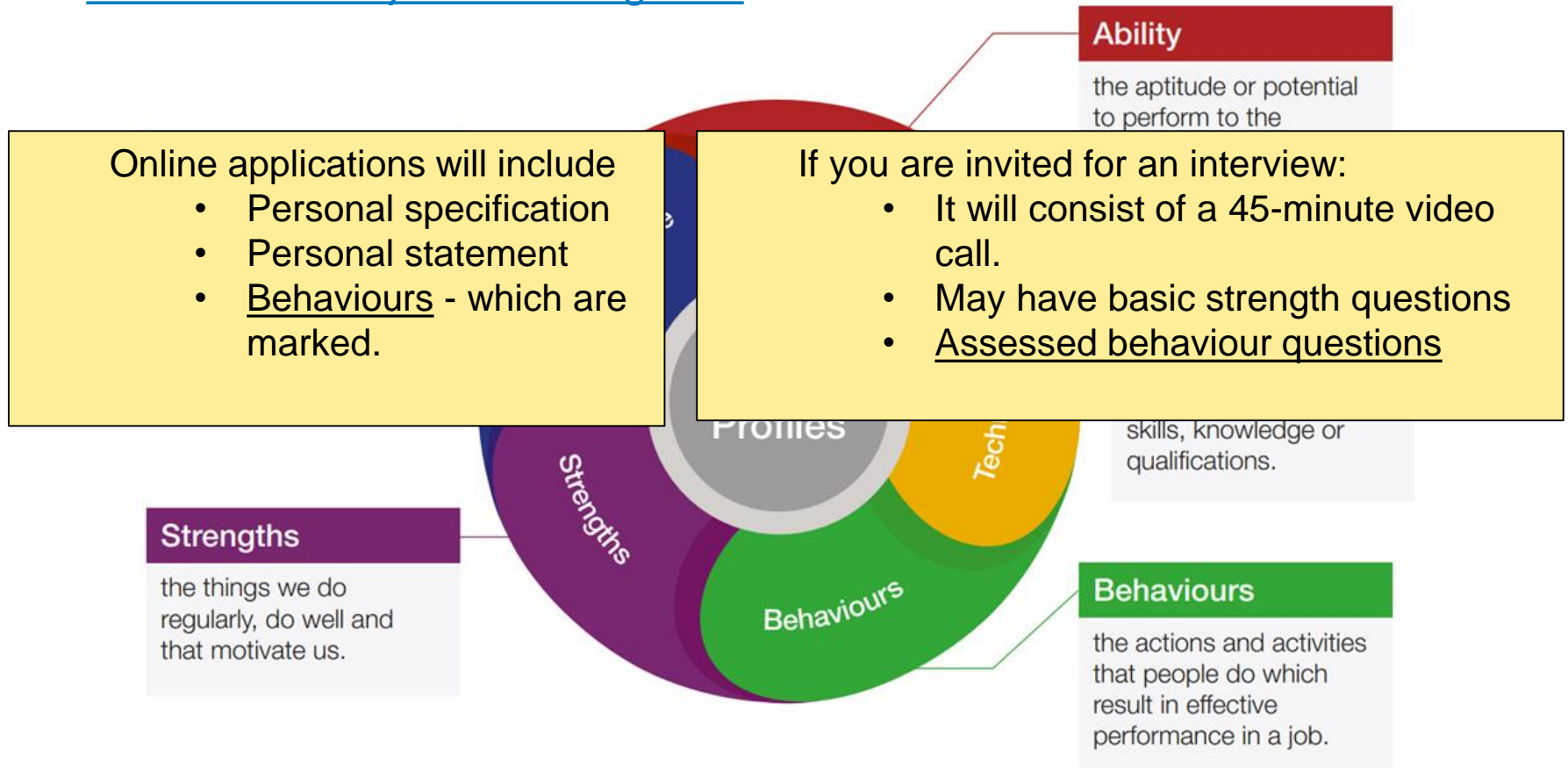
So... Overview of application process

- Find and apply for all civil service jobs and internships at www.civilservicejobs.service.gov.uk



Overview of application process

- Find and apply for all civil service jobs and internships at www.civilservicejobs.service.gov.uk



How applications are assessed

Experience - Essential Criteria:

- Job adverts will contain essential criteria showing skills required and responsibilities of the role.
- E.g: You will have evidence of leadership with the ability to drive forward your own work area
- Where possible include demonstrations of these skills in your application.
- Don't hesitate to apply if you don't have all of these !

Behaviours:

You assessed on how you have demonstrated certain behaviours. For example:

Delivering at Pace



Seeing the Big Picture



Making Effective Decisions



Communicating and Influencing



Top tips

- **Read the guidance:** [Success Profiles - GOV.UK \(www.gov.uk\)](https://www.gov.uk)
- **Take a particularly close look at the [behaviours guidance](#)**

Delivering at Pace

Show a positive approach to keeping the whole team's efforts focused on the top priorities. Promote a culture of following the appropriate procedures to ensure results are achieved on time whilst still enabling innovation. Ensure the most appropriate resources are available for colleagues to use to do their job effectively. Regularly monitor your own and team's work against milestones ensuring individual needs are considered when setting tasks. Act promptly to reassess workloads and priorities when there are conflicting demands to maintain performance. Allow individuals the space and authority to meet objectives, providing additional support where necessary, whilst keeping overall responsibility.

Top tips

- Read the guidance: [Success Profiles - GOV.UK \(www.gov.uk\)](http://www.gov.uk)
- Take a particularly close look at the [behaviours guidance](#)
- **Use examples rather than just making claims**
- **Use the STAR (Situation, Task, Action, Result) model to structure your responses**

Finding new opportunities

- Join the RSB-run Plant Health Professionals Network
- Fellowship or job adverts posted as well as different plant health talks
- Plant health contacts from around the world!



[Plant Health Professionals Network | Groups | LinkedIn](#)