

Naomi Smith

From: Royal Society of Biology Training <Society.of.Biology@cmp.dotmailer.co.uk>
Sent: 31 August 2017 16:12
To: Naomi Smith
Subject: Training & Personal Development Newsletter August 2017



[Open this email in a web browser](#)
[Manage your subscriptions](#)

Training and Personal Development



August 2017

We have now reopened booking for our popular [project management course](#) in September, limited places remain so please book soon to avoid disappointment.

This autumn we are repeating many of our most popular courses, including science podcasting, persuasive scientific report writing, laboratory leadership, presentation skills and unconscious bias.

We are also providing new courses on volunteer support, mental health in the workplace, time management and public engagement.

Please see our website for a full list of our [upcoming courses](#).

Training support for organisations

We are expanding our in-house training provision and offer a range of courses to suit your needs. Further information is available, including a list some of our popular courses that we offer in-house, on our [website](#). We may also be able to run bespoke courses on topics not listed here. To enquire about receiving in-house training at your organisation please [contact us](#) to discuss your requirements.

Discounts of up to 50% of the full price training fees are available on our open courses, to all staff and members of our [Member Organisations](#).

Group booking discounts of up to 10% are also now available for our members and Member Organisations. To make a group booking please contact [Naomi Smith](#).



Best Wishes,
Naomi Smith
Training Officer
training@rsb.org.uk



Share this newsletter:



Upcoming RSB training courses

An Introduction to Project Management

When: 27 September 2017 (full day course)

Where: Lumen URC, 88 Tavistock Place, London WC1H 9RS

What: Participants will learn the skills and planning tools they need to successfully complete a project, and how to anticipate and resolve the issues they are likely to encounter on the way.

Tutor: The course tutor Dr Cliff Collis FRSB worked as a communications specialist for a large drug company. His responsibilities included working with drug development teams in knowledge/ issue management, to progress new drugs through the development process.

Who: A course for those who have recently become involved in or responsible for project management but who have limited or no experience or training.

CPD: This event has been approved by the Royal Society of Biology for purposes of [CPD](#) and can count as 21 CPD points.

Fees: From £100 +VAT

Registration Deadline: Booking for this course has reopened with limited places remaining: Please register by Wednesday the 20th September to secure your place on this course.

Please see the event webpage for [further info and booking.](#)



Science Podcast Production

When: 11 October 2017

Where: Royal Society of Biology, Charles Darwin House, 12 Roger Street, London, WC1N 2JU

What: Award-winning science broadcaster Richard Hollingham presents this introductory hands-on course on how to podcast - from getting good quality sound and content - to getting your podcast online and heard.

Tutors: Richard Hollingham studied Applied and Environmental Biology at the University of York. As a BBC producer, reporter and presenter, he developed extensive experience in communicating the biosciences to general audiences.

Who: This course is for those who would like to learn to communicate science via podcasting.

CPD: This event has been approved by the Royal Society of Biology for purposes of [CPD](#) and can be counted as 18 CPD points.

Fees: From £188 + VAT

Registration Deadline: Please register by Friday the 8th of September to secure your place on this course.

Please see the event webpage for [further info and booking](#).



Persuasive Scientific Report Writing

When: 16 October 2017 (full day course)

Where: Medical School, University of Birmingham, Vincent Drive, Edgbaston, Birmingham, B15 2SG

What: Following the success of the previous courses in 2014, 2015 and 2016, the Society continues to offer this one-day introductory course. Participants will learn the principles and processes for high quality communication in scientific thinking and writing, with plenty of opportunity to discuss and practise the skills learned.

Tutor: The course tutor Dr Cliff Collis FRSB worked as a communications specialist for a large drug company. His responsibilities included working with drug development teams in knowledge/ issue management for meetings, to progress new drugs through the development process.



Who: For writers of technical, scientific and other related reports or documents, who wish to improve their report and general document writing skills.

CPD: This event has been approved by the Royal Society of Biology for purposes of [CPD](#) and can count as 18 CPD points.

Fees: From £100 +VAT

Registration Deadline: Please register by Wednesday the 13th of September to secure your place on this course.

Please see the event webpage for [further info and booking](#).

Volunteer Support and Management

When: 18 October 2017 (full day course)

Where: Lumen URC, 88 Tavistock Place, London WC1H 9RS

What: Volunteers give their time for free to get involved in statutory, community and charitable work and are an integral part of the life of most community organisations. They bring a huge amount of capacity, knowledge, enthusiasm and empathy, but in order for it to work their involvement needs to be well planned and managed. This course will equip you with knowledge and skills needed to do this.

Tutor: Karen Chillman, head of volunteering at Croydon Voluntary Action (CVA), has worked in the charity sector for over 30 years and has spent over 15 years working with local organisations to develop their volunteering good practice.

Who: For those who are new to, or would like to improve their skills in, volunteer support and management.

CPD: This event is approved by the Royal Society of Biology for purposes of [CPD](#) and may be counted as 15 CPD credits.

Fees: From £100 + VAT

Registration Deadline: Please register by Friday the 15th of September to secure your place on this course.

Please see the event webpage for [further info and booking](#).



Laboratory Leadership and Management

When: 20 October 2017 (full day course)

Where: Meeting Room 2, Charles Darwin House 2, 107 Gray's Inn Road, London, WC1X 8TZ

What: Management skills are vital for a successful career in a scientific lab environment. As well as their research expertise, successful team leaders need to develop additional skills including the ability to support staff, manage their own team, and deal with issues within the team. This course will help you to develop these skills.

Tutor: The course tutor is Charlie Wilson OBE MRSB. For the last six years he has been a coach and consultant in teamworking and leadership, working with industry, banks and schools.

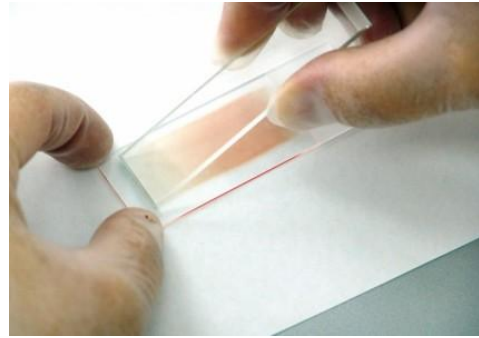
Who: This course is suitable for laboratory team leaders and principal investigators who want to improve the way they manage their teams and Postdoctoral researchers who have been selected for, or aspire to, promotion to team leadership positions.

CPD: This event has been approved by the Royal Society of Biology for purposes of CPD and can be counted as 24 CPD points.

Fees: From £125 + VAT

Registration Deadline: Please register by Monday the 18th of September to secure your place on this course.

Please see the event webpage for [further info and booking](#).



Presentation Skills

When: 25 October (afternoon course)

Where: Meeting Room 2, Charles Darwin House 2, 107 Gray's Inn Road, London, WC1X 8TZ

What: This course covers personal presentation and body language; structuring your presentation; uses and abuses of visual aids; and meeting the needs of your audience.

Tutor: Course tutor Sue Smith is professor in medical education and director of teaching at the National Heart and Lung Institute, a constituent of the Faculty of Medicine, Imperial College London.

Who: This half-day course is for those who have had little experience of giving presentations.



CPD: This event has been approved by the Royal Society of Biology for purposes of [CPD](#) and can be counted as 12 CPD points.

Fees: From £75 + VAT

Registration Deadline: Please register by Friday the 22nd of September to secure your place on this course.

Please see the event webpage for [further info and booking](#).

Public Engagement Training from RSB and STEM Learning

When: 02 November 2017 (afternoon course)

Where: STEM Learning, 5th Floor, Woolgate Exchange, 25 Basinghall Street, London EC2V 5HA



What: This course will provide an opportunity to learn about public engagement and science outreach, to share knowledge and network. RSB members can learn about opportunities available through becoming a STEM ambassador and STEM ambassadors can learn about RSB's work as a professional body.

The training will also cover other ways to work and volunteer in science communication and public engagement, including outreach work with schools, universities or employers.

During the afternoon participants can learn how to deliver some simple hands-on science outreach activities and to practice this as part of a group, as well as discussing how to share your own science activities by outreach and engagement.

Tutor: Dr Amanda Hardy MRSB is the senior outreach officer at the Royal Society of Biology. Amanda is responsible for the strategy, implementation and delivery of engagement and outreach activities; working with schools, the public, and stakeholders including professional bodies and learned societies.

Who: This event is free and is open to RSB members and STEM ambassadors to attend.

CPD: This event is approved by the Royal Society of Biology for purposes of CPD and may be counted as 9 CPD credits.

Fees: Free

Registration Deadline:

Please see the event webpage for [further info and booking](#).

Unconscious Bias

When: 08 November 2017 (morning course)

Where: Charles Darwin House 2, 107 Gray's Inn Road, London, WC1X 8TZ

What: This half day awareness building course aims to educate staff and managers so that they can lead by example in the quest to change mind-sets and create a more diverse and inclusive workplace.

Tutor: Sally Baker is a chartered fellow of the Chartered Institute Personnel Managers & Developers (CIPD) and is a proven inclusion, equality and diversity specialist, as well as HR generalist with over 18 years experience.

Who: This course is useful for all staff

CPD: This event is approved by the Royal Society of Biology for purposes of CPD and may be counted as 9 CPD credits.

Fees: From £90 + VAT

Please see the event webpage for [further info and booking.](#)



Mental Health in the Workplace

When: 08 November 2017 (afternoon course)

Where: Meeting Room 2, Charles Darwin House 2, 107 Gray's Inn Road, London, WC1X 8TZ

What: This half-day workshop will help you to build your awareness of the range of mental health issues that we can experience. It will focus on how we can create a psychologically healthy working environment and improve our wellbeing inside and outside of work.

Tutor: Sally Baker is a chartered fellow of the Chartered Institute Personnel Managers & Developers (CIPD) and is a proven inclusion, equality and diversity specialist, as well as HR generalist with over 18 years experience.

Who: This course is useful for all staff

CPD: This event is approved by the Royal Society of Biology for purposes of CPD and may be counted as 9 CPD credits.

Fees: From £90 + VAT

Please see the event webpage for [further info and booking.](#)



Time Management - How to do more with less

When: 20 November 2017 (afternoon course)

Where: Meeting Room 2, Charles Darwin House 2, 107 Gray's Inn Road, London, WC1X 8TZ

What: Take a few hours out of your day to reassess the purpose of your role and how to achieve key tasks. The emphasis is on people developing an action plan, with practical tasks and habit changes, to which they feel committed.

Tutor: Kathey Bailey (Ba, Chartered FCIPD, TAP certified, TrainerBase Certified Learning Practitioner) worked in the computer industry followed by recruitment and training consultancy work. Since then she has delivered more than 1,600 training programmes for a wide range of organisations, including the pharmaceutical, energy, NGO and institutes and associations sectors.

Who: This course is useful for all staff.

CPD: This event has been approved by the Royal Society of Biology for purposes of [CPD](#) and can be counted as 9 CPD points.

Fees: From £80 + VAT

Please see the event webpage for [further info and booking](#).

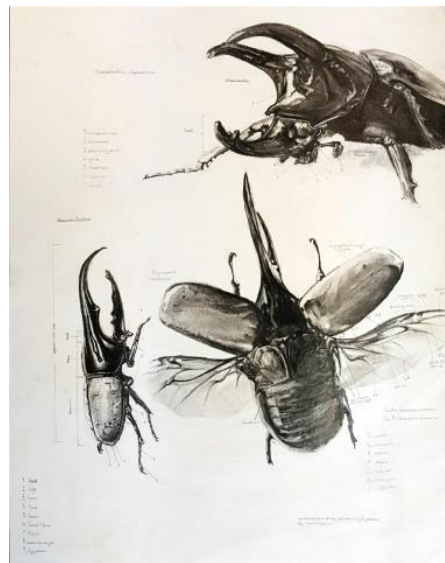


RSB Awards and Competitions

The Nancy Rothwell Award specimen drawing competition

The Nancy Rothwell Award celebrates specimen drawing in schools and highlights the benefits of combining art and science. Entry is open to 7 – 18 year olds.

To enter please submit your electronic entry (jpg, png, tiff format) with a completed [application form](#) to [Lucy Coia](#) by **Monday 11th September**. For further information please see the RSB [website](#).



External training providers offering free or discounted places for RSB members

Wildlife Conservation Programme, Nkonzo Bush Academy, South Africa

Where: Near Mossel Bay, South Africa

Nkonzo Bush Academy would like to offer all RSB members a 20% discount for the year of 2017 on their Wildlife Conservation Program.

Find exclusive details on their [website](#) or [email](#) them.



Field Studies Council Receives £1.23 million National Lottery award to support biodiversity training

Field Studies Council, FSC, are delighted to have been awarded a National Lottery grant of £1.23 million from the Heritage Lottery Fund (HLF) for their exciting new BioLinks project.

Thanks to money raised by National Lottery players, BioLinks will support, signpost and mentor existing and new natural historians who volunteer their time. This will help them to help them to become more proficient biological recorders. It will provide more taxonomic training for underrepresented species, especially those that are difficult to identify. Species focused on will include beetles, snails, true flies, ants and wasps.

FSC aims to involve existing and new biological recorders in the project, hoping to extend not only the number of active natural history observers but also increase their age range and diversity. Over the five year project BioLinks will work across the West Midlands region and London and South East to engage with 2,500 volunteers, delivering 480 training courses and 33 events.

Events will include community bioblitzes, visits to national collections, volunteer celebration events and knowledge sharing events. **They will be offered free or at a heavily subsidised rate to ensure cost is not a barrier to participation.**

Find out more on the [Field Studies Council](#) website.

Upcoming Member Organisation Training Events

Event	Date and Venue
British Society of Immunology Seminar Series	14.09.16 - 13.09.17 <i>Cardiff University, UK</i>
Pharmacokinetics & Pharmacodynamics (PKPD) workshop	11.09.17 - 12.09.17 <i>Thistle Hotel Euston, London, UK</i>



[Latest Developments in Primate Conservation](#)

11.09.17 - 15.09.17
Durrell Conservation Academy, Jersey

[Advanced Statistics for Nutrition Research course](#)

14.09.17
The Nutrition Society, London, UK

[Exosomes and Microvesicles in Cancer: Roles in Disease Pathology and Therapy](#)

14.09.17- 15.09.17
The Biochemical Society, London, UK

[British Pharmacological Society Integrative & In Vivo Pharmacology workshop](#)

18.09.17
The British Pharmacological Society, London, UK

[Advanced bat survey techniques level 2 \(field skills\)](#)

19.09.17 - 21.09.17
The Bat Conservation Trust Wakehurst, West Sussex, UK

Jobs Board

[Regional Account Manager \(UK/Benelux\)](#)

NanoString Technologies, UK

[Consultant Interventional Cardiologist](#)

Betsi Cadwaladr University Local Health Board, Wales, UK

[Clinical Research Fellow](#)

Imperial College London, Greater London, UK

[Clinical Research Fellow](#)

Medical Research Council, Greater London, UK



[Manage your subscription with MySociety](#)